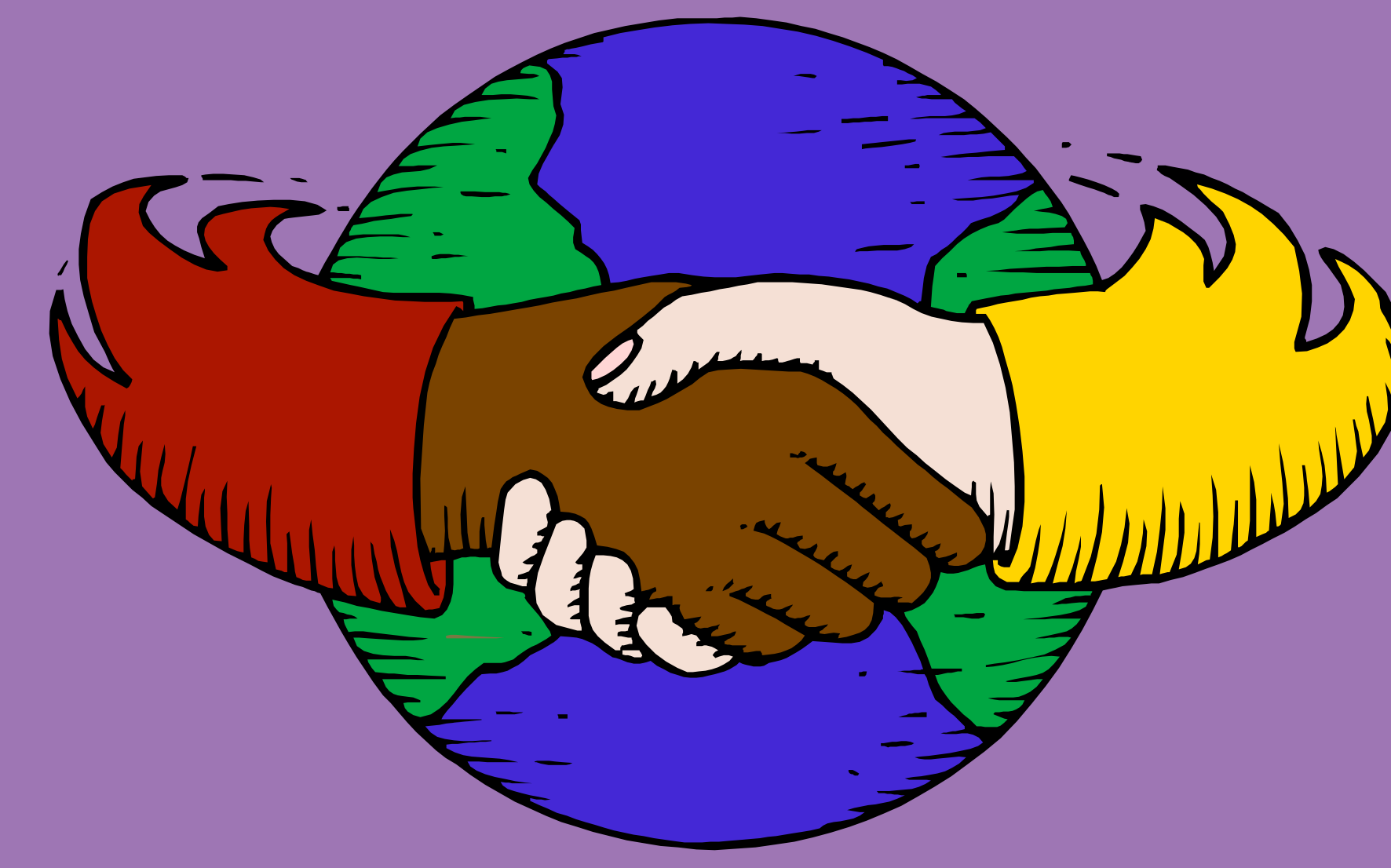


# Welcome to the Carrowbehy Bog Road



Gorthaganny  
Community  
Development  
Company

## Look around you and see the wonderful selection of wildlife, habitats and wildflowers in our beautiful county. How many can you see in this area?



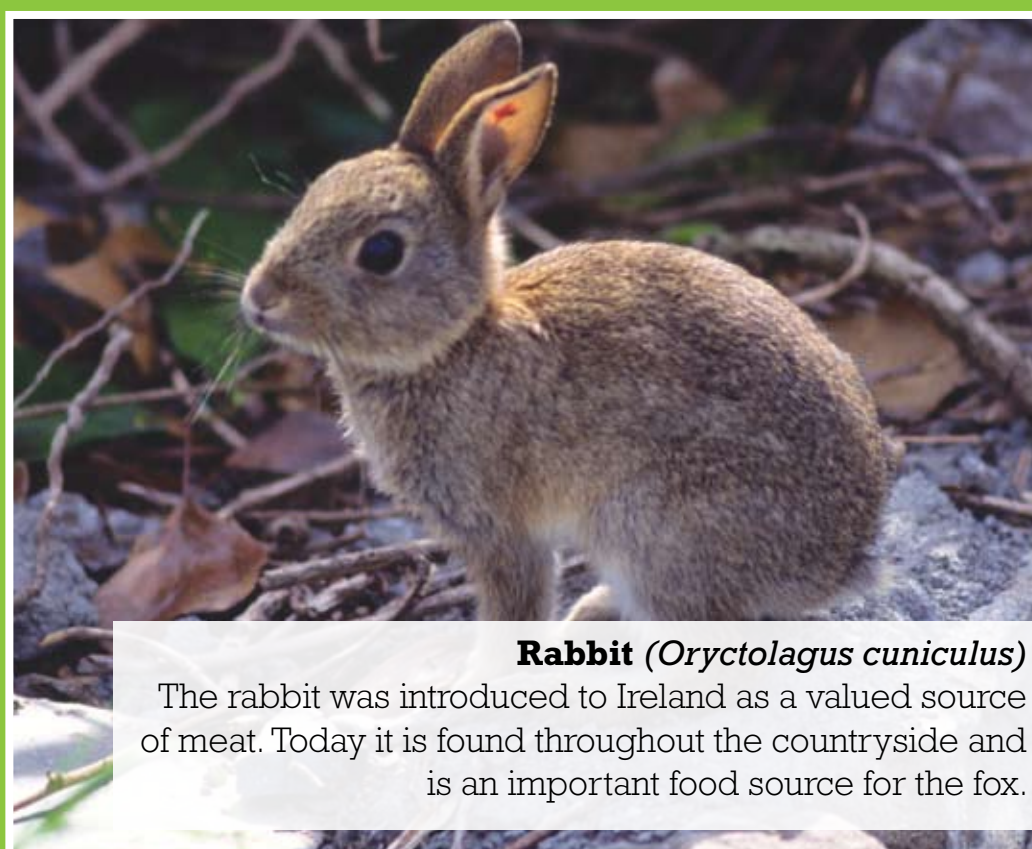
**Fox (*Vulpes vulpes*)**

The red fox is a wild relative of the dog. It hunts mainly at night and feeds mostly on rabbits, rats and mice. A common sight in the countryside and sometimes in towns.



**Hedgehog (*Erinaceus europaeus*)**

The hedgehog is distinctive with its spines and comes out at night to feed on slugs, snails and worms. It hibernates between October and early April.



**Rabbit (*Oryctolagus cuniculus*)**

The rabbit was introduced to Ireland as a valued source of meat. Today it is found throughout the countryside and is an important food source for the fox.



**Small Tortoiseshell (*Aglais urticae*)**

The small tortoiseshell is one of the most colourful butterflies in Ireland. It is one of the first butterflies to be seen in early summer.



**Bird's Foot Trefoil (*Lotus corniculatus*)**

Flowers from June to September. It grows abundantly in pastures and roadsides throughout County Roscommon.



**Dandelion (*Taraxacum*)**

There are about 100 micro species of dandelion in Ireland. Flowering occurs from March to October and peaks in May.



**Water Avens (*Geum rivale*)**

It grows in damp areas. The drooping reddish flowers appear from June to August.



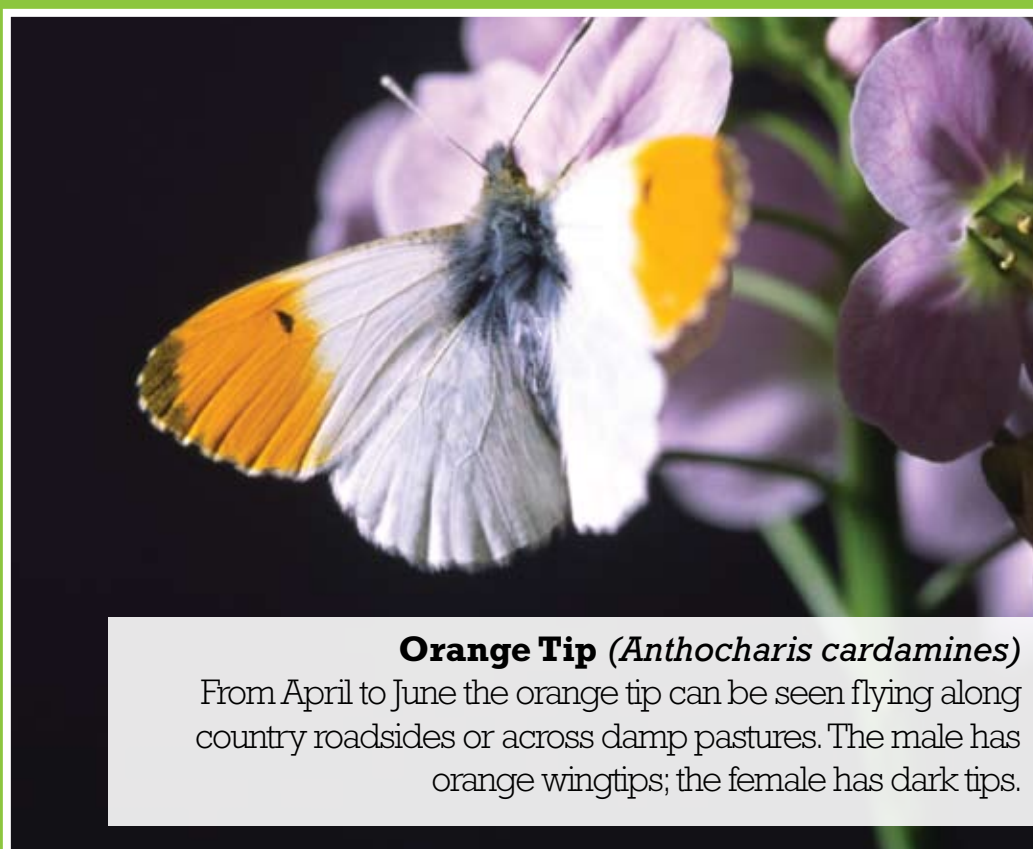
**Ox-eye Daisy (*Leucanthemum vulgare*)**

Flowers between June and August. Found on roadsides, waste ground and in old meadows.



**Peacock (*Inachis io*)**

This butterfly gets its name because of the similarity of the spots on its wings to a peacock's tail. With a wingspan of around 70mm, this is one of our largest butterfly species.



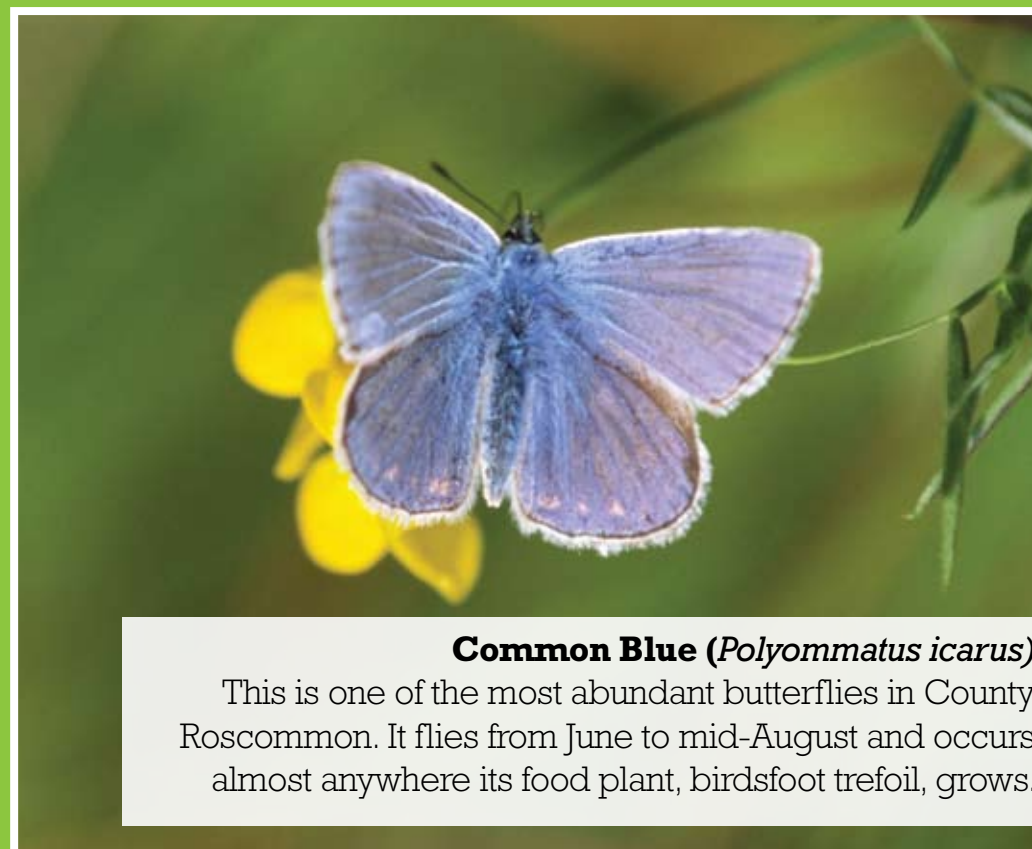
**Orange Tip (*Anthocharis cardamines*)**

From April to June the orange tip can be seen flying along country roadsides or across damp pastures. The male has orange wingtips; the female has dark tips.



**Marsh Fritillary (*Euphydryas aurinia*)**

The marsh fritillary frequents damp meadows where its food plant, devil's-bit scabious, grows. It flies in May and June and can be seen in many places in County Roscommon.



**Common Blue (*Polyommatus icarus*)**

This is one of the most abundant butterflies in County Roscommon. It flies from June to mid-August and occurs almost anywhere its food plant, bird's-foot trefoil, grows.



**Corn Poppy (*Papaver rhoeas*)**

Flowers from June to August. Grows in waste places and tiled ground.



**Yellow Flag (*Iris pseudacorus*)**

Flowers in June and July and flourishes in damp fields, ditches, marshes and riversides.



**Pitcher-plant (*Sarracenia purpurea*)**

Flowers from May to July. Stores water in its distinctive pitcher-shaped leaves and captures insects.



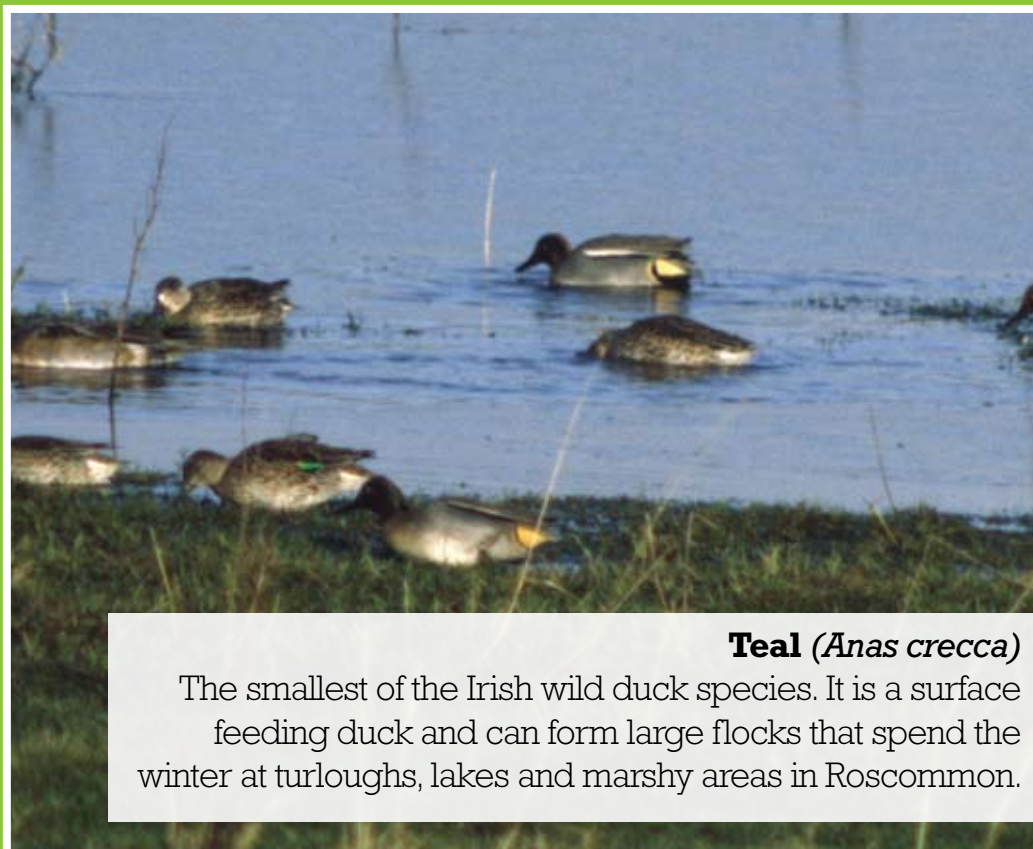
**Irish Lady's Tresses (*Spiranthes romanoffiana*)**

A member of the orchid family and one of the rarest wildflowers in Ireland. It flowers in July and August near Lough Allen.



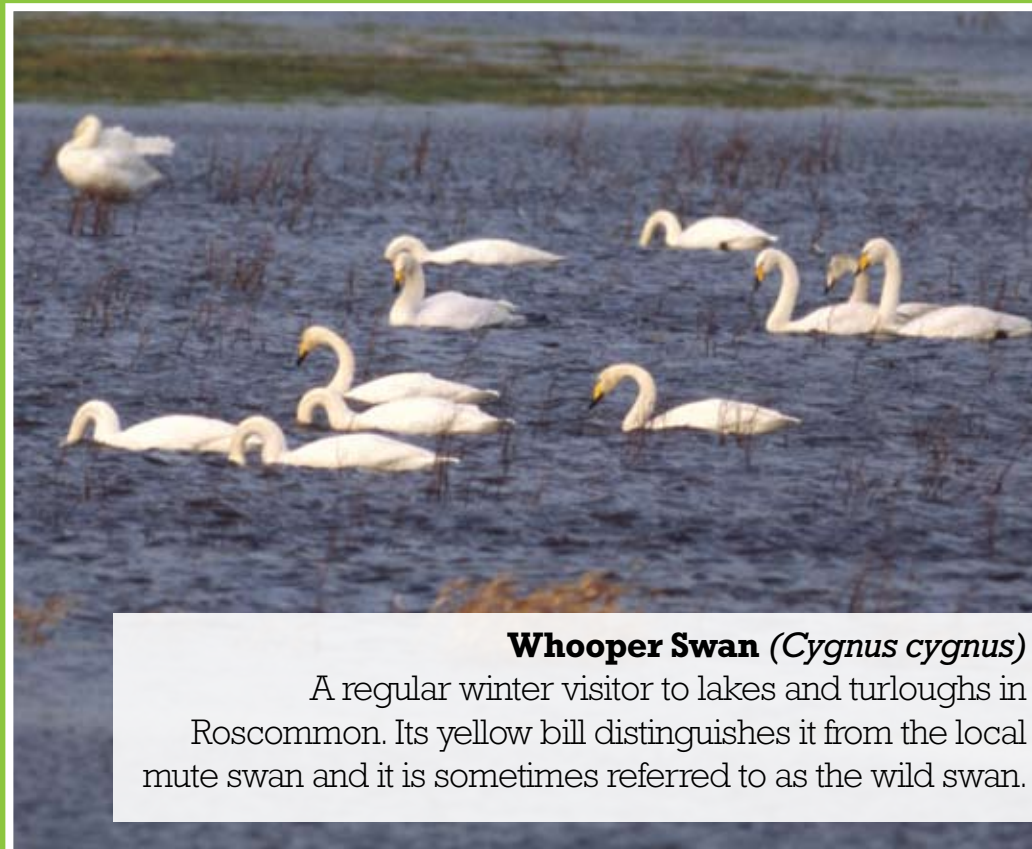
**Jackdaw (*Corvus monedula*)**

The jackdaw is the smallest of the crow species. It is equally at home in the town and the countryside. In winter it can form large flocks that roost on tall trees.



**Teal (*Anas crecca*)**

The smallest of the Irish wild duck species. It is a surface feeding duck and can form large flocks that spend the winter at loughs, lakes and marshy areas in Roscommon.



**Whooper Swan (*Cygnus cygnus*)**

A regular winter visitor to lakes and loughs in Roscommon. Its yellow bill distinguishes it from the local mute swan and it is sometimes referred to as the wild swan.



**The 7-spot Ladybird (*Coccinella septempunctata*)**

This brightly coloured ladybird is the most familiar of beetles and is probably the only one most people will handle. Helpful to gardeners as they have an appetite for aphids.



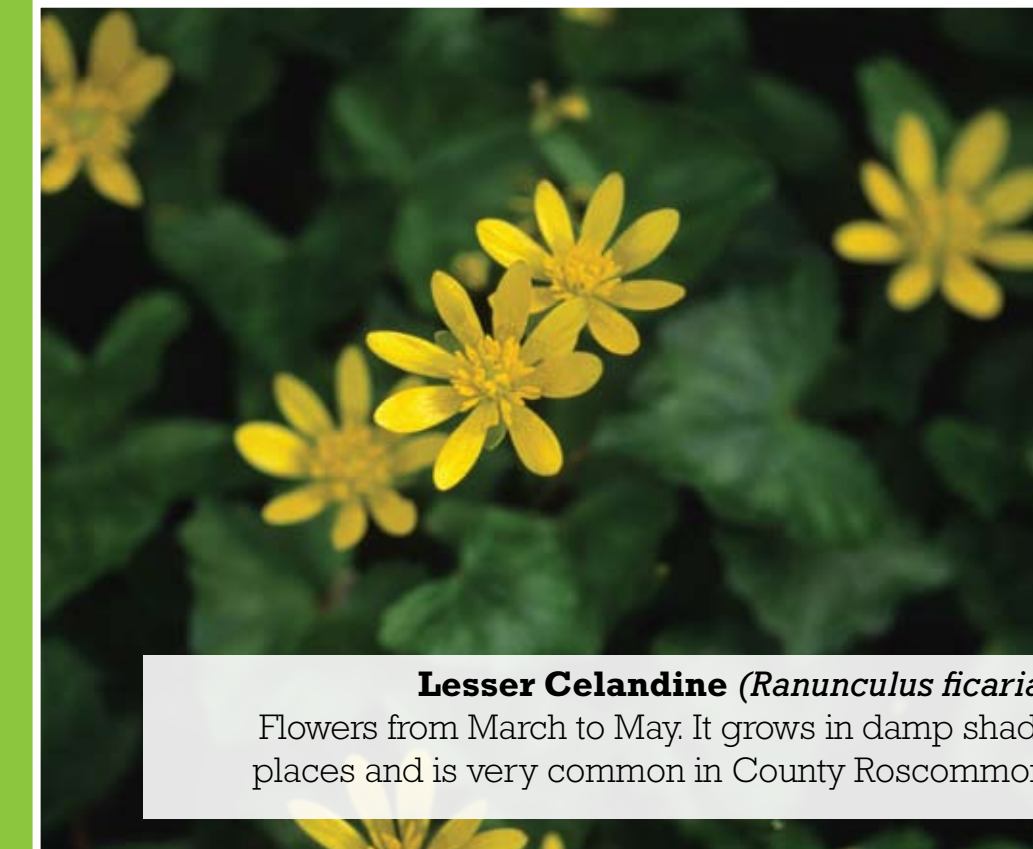
**Toothwort (*Lathraea squamaria*)**

Flowers in April and May. Parasitic plant that grows woods at Mote Park, Lough Key Forest Park and St. John's Wood.



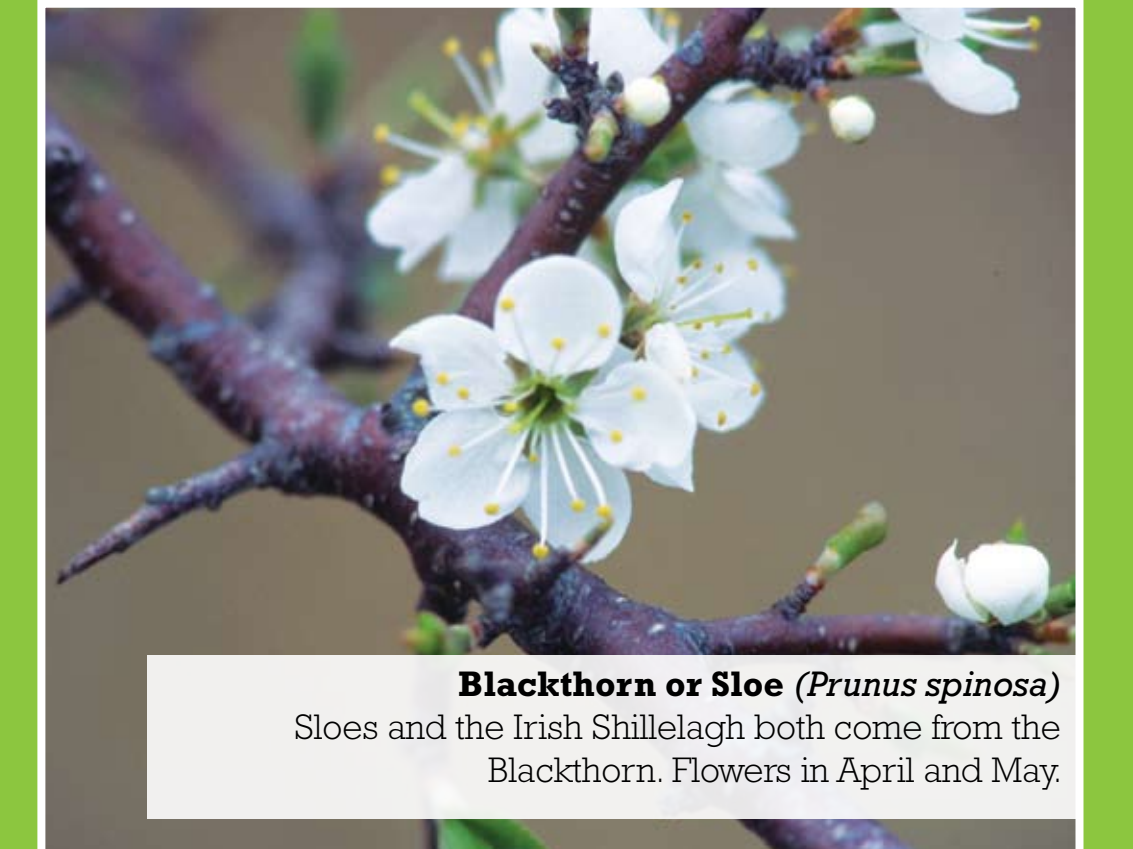
**Wood Anemone (*Anemone nemorosa*)**

A plant that grows up to 150mm high; found in woods and hedgerows from March to May.



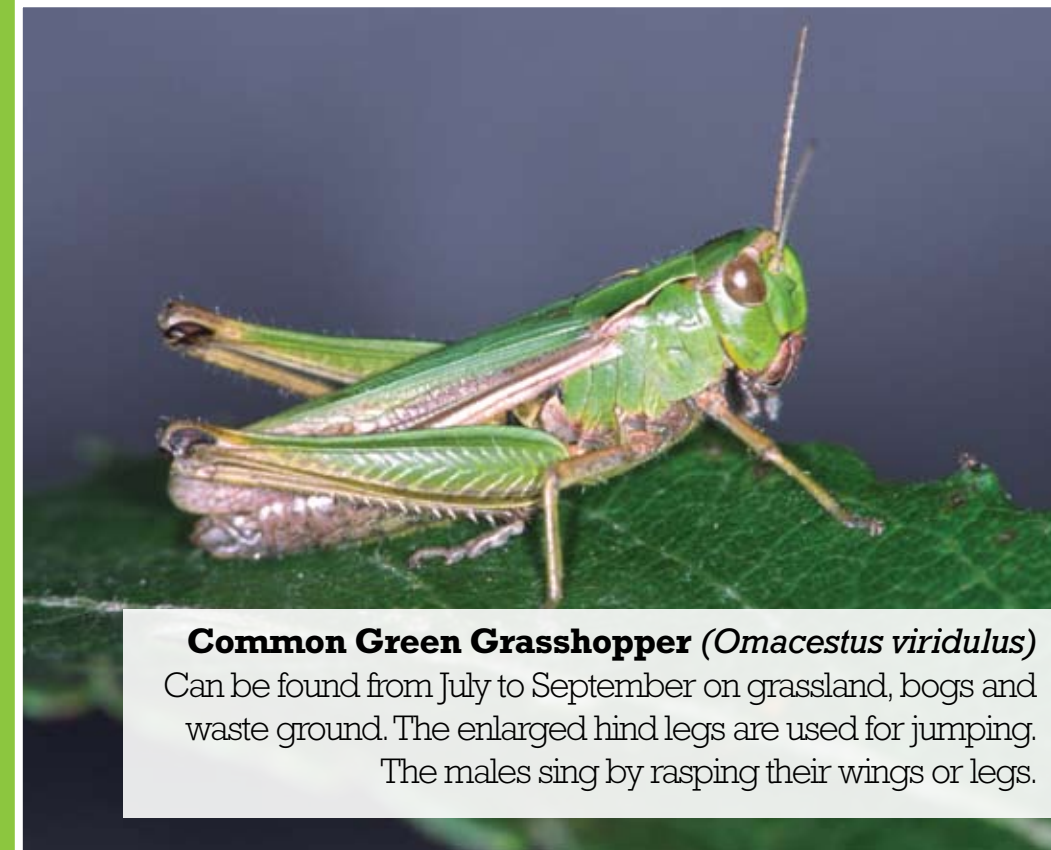
**Lesser Celandine (*Ranunculus ficaria*)**

Flowers from March to May. It grows in damp shady places and is very common in County Roscommon.



**Blackthorn or Sloe (*Prunus spinosa*)**

Sloes and the Irish Shillelagh both come from the Blackthorn. Flowers in April and May.



**Common Green Grasshopper (*Omaecystus viridulus*)**

Can be found from July to September on grassland, bogs and waste ground. The enlarged hind legs are used for jumping. The males sing by rasping their wings or legs.



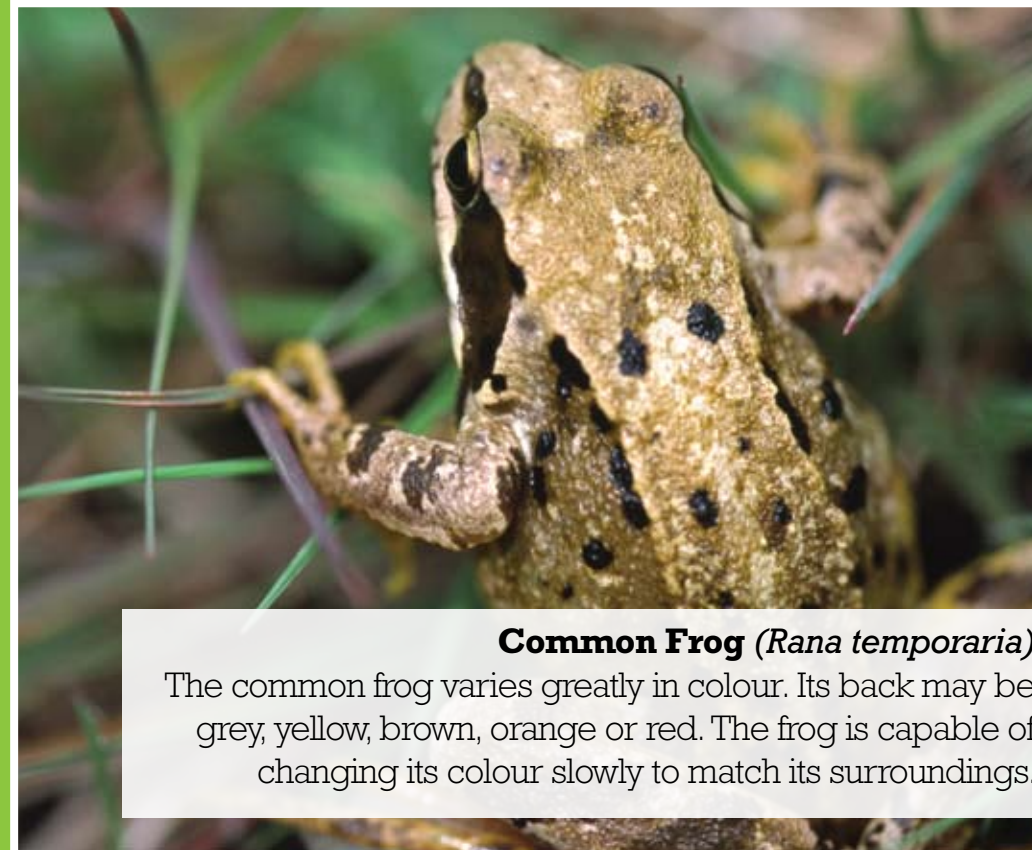
**The Four-Spotted Chaser Dragonfly (*Libellula quadrimaculata*)**

Among the fastest flying insects in the world. This species inhabits boggy pools and flies from mid-May to mid-August.



**Large Red Damselfly (*Pyrrhosoma nymphula*)**

It is the only red damselfly in Ireland and can be seen from mid-May to mid-August as it flies over drains, streams and bogs. It is very common.



**Common Frog (*Rana temporaria*)**

The common frog varies greatly in colour. Its back may be grey, yellow, brown, orange or red. The frog is capable of changing its colour slowly to match its surroundings.



**Cowslip (*Primula veris*)**

Grows in the lime-rich parts of central Ireland and is rare elsewhere. It flowers in April and May.



**Purple Loosestrife (*Lythrum salicaria*)**

Abundant in County Roscommon in ditches, marshes and wet meadows. It flowers in July and August.



**Spear Thistle (*Cirsium vulgare*)**

A plant of grassland and waste ground. Flowers in July and August. It is common throughout Roscommon.



**Knapweed or Blackheads (*Centaurea nigra*)**

Flowers from July to September and is common in pastures, banks, meadows and roadsides.



**Tadpole of Common Frog (*Rana temporaria*)**

Frogs hibernates in winter and emerge in early spring to lay eggs, known as frogspawn, which hatch into tadpoles.



**Brown Trout (*Salmo trutta*)**

Young trout have dark blotches along their sides and are known as parr. Trout require pristine rivers and lakes to survive and are a good indicator of clean water.



**Hawthorn Fruit (*Crataegus monogyna*)**

The scarlet "haws" of the hawthorn tree provide food for birds, especially thrushes and finches, in the autumn and winter. The haws are also an important food source for the wood mouse.



**Pied Wagtail (*Motacilla alba yarellii*)**

This slim, elegant, long-tailed bird does not "wag" so much as "bob" its tail. They usually live near water and are present throughout the year.



**Bee Orchid (*Ophrys apifera*)**

Flowers in June and July. Grows in gravel areas and sometimes in disturbed ground after road-widening.



**Pyramidal Orchid (*Anacamptis pyramidalis*)**

Named because of its distinctive shape. Grows in pastures, banks and sandy areas. Flowers in June and July.



**Lesser Butterfly Orchid (*Platanthera bifolia*)**

The scented flowers appear in June and July. It grows in damp pastures and bogs.



**Bog Asphodel (*Narthecium ossifragum*)**

In July and August its colourful yellow flowers brighten the bogs all over Roscommon.



**Honeysuckle (*Lonicera periclymenum*)**

Honeysuckle or woodbine is one of Ireland's few woody climbing plants. Its pink-yellow flowers appear from June to August and have a pleasant, strong fragrance.



**Corsie (*Ulex europaeus*)**

A member of the pea family it is also known as furze and whin. The countryside is a glorious yellow with scented flowers of the corsie from March to May.



**Primrose (*Primula vulgaris*)**

The primrose flowers in early spring and is one of the first flowering plants of the year. It grows in hedgerows, woods and old grasslands throughout the county.



**Fly Agaric Fungus (*Amanita muscaria*)**

This bright-red fungus grows in wooded areas, particularly pine and birch woods. It appears between August and November. It is poisonous.



**Sundew (*Drosera rotundifolia*)**

Captures insects on sticky droplets on the leaves. It flowers from May to August.



**Marsh Helleborine (*Epipactis palustris*)**

A very elegant, rare plant of damp places and marshes. Can grow up to 450mm tall. It flowers in June and July.



**Marsh Pea (*Lathyrus palustris*)**

Flowers June to July and grows in marshy meadows. In Roscommon it grows close to Lough Ree and the River Shannon.



**Water Germander (*Teucrium scordium*)**

Flowers in July and August. A very rare wildflower in Ireland but is frequent on the shores of Lough Ree and Lough Deeg.

[www.roscommoncoco.ie](http://www.roscommoncoco.ie)



County Roscommon  
Heritage Forum  
  
Fóram Oidhreachta  
Chontae Ros Comáin

An Chomhairle Oidhreachta  
The Heritage Council

Tidy Towns  
Caring for our environment



Comhairle, Oidhreachta agus Riailas Áitiúil  
Environment, Heritage and Local Government

notice nature  
take action on biodiversity loss



Produced by Gorthaganny Community Development Company in association with Roscommon County Council © 2010  
An action of the County Roscommon Heritage Plan and County Roscommon Biodiversity Plan.  
Text and images: John J Earley MSc. © 2009. Funded by the Heritage Council & [www.enviro.ie](http://www.enviro.ie)

Design by [www.creativefreedom.ie](http://www.creativefreedom.ie)